
USER GUIDE

HERA II



Date 25.08.2010 - version 3



93/42/EØF CLASS I
EN ISO 10535
EN 60601-1-2

CONTENTS

1. SAFETY INSTRUCTIONS FOR HERA	2
1.1 Description of parts	3
1.2 Unpacking	3
1.3 Assembly	3
1.4 Purpose	3
1.5 Use	3
1.6 General remarks about using the Hera	3
1.7 General remarks for the carer	4
2. CLEANING	4
3. TIPS AND HINTS ABOUT ADJUSTMENT	4
4. MAINTENANCE	4
5. GUARANTEE	4
7. SPARE PARTS	4
8. TECHNICAL DATA AND MARKING	5
9. ACCESSORIES	6

Congratulations!

Thank you for choosing the Ergolet Hera bath/shower/toileting chair. Please use a couple of minutes to read this guide and familiarise yourself with its many advantages and functions.

The user in this guide is the person to be bathed.

The carer is the person who assists the user.

Explanation:



Important - special attention is required



Note the intervals stated and the information concerning these intervals



Guidance concerning the technical handling



Guidance concerning use with the user

1. SAFETY INSTRUCTIONS FOR HERA



Before using the Hera ensure that all control and safety instructions in this User Guide have been studied and understood. The Hera shower/bath/toileting chair must only be used according to this User Guide. All personnel using this chair must be instructed and must also have read this User Guide.

This chair is designed for users with a maximum weight of **140 kg**. Always remember to take the users personal needs and conditions into account.



Ensure that the chair has been correctly assembled and according to this User Guide. Only personnel who have been instructed in the correct use must use the chair.

Any danger of squeezing or other hazard to the user or personnel must be eliminated before and during use

Warn the user against smoking in the chair since the seat, back and neck support contain flammable materials.

Under special circumstances a build up of static electricity can occur (eg. using on a plastic floor or in very dry air). These conditions should be avoided – the chair can alternatively be supplied with anti static wheels.



Never use the chair if there is any suspicion of a defect (loose parts, loose brackets etc.).

Daily check –

The carer is responsible for a visual check for apparent faults in the chair BEFORE use and also to inform the manufacturer of any such fault.

- The chair**
- Ensure that there are no parts missing
 - Ensure that there is no abnormal play in the weight bearing parts such as the seat, wheels, tilt brackets, click locks etc.
 - Check for signs of rust or other surface damage to the chair. The chair is manufactured in stainless steel.
 - Ensure that the frame has no fractures
 - Ensure that the chair is at room temperature (seat, back support and neck support), the temperature should be approx. 20 degrees and no higher than 41 degrees Celsius.

Accessories:

- Ensure that all accessories are in good working order and that they do not represent any threat to the safety of the user.



1.1 Description of parts



Pos. no.	Description
1	- Neck support
2	- Back support incl. parts
3	- Arm rest
4	- Seat
5	- Bucket
6	- Foot rests
7	- Seat/back support unit
8	- Gas spring



1.2 Unpacking – unpack the chair carefully and check for any apparent transport damage. Please contact your dealer immediately if the chair is damaged. Check that the contents are in accordance with the delivery note and that all parts including accessories have been unpacked.

1.3 Assembly - Hera is delivered assembled

1.4 Purpose – The Hera chair is designed as an aid for bathing and other hygienic purposes in nursing homes and homecare. This requires that at least one carer is instructed in its use, other non instructed personnel must not use the chair. Maximum user weight is 140 kg, the chair must **never** be used for other purposes. It is always the carer who must evaluate whether the user can stand being carried, helped and transported in the Hera chair.

1.5 Use - The Hera chair is normally used in the following situations:

1. When washing in the bathroom, under the shower or by the bath.
2. When transporting the user to the bathroom
3. For other purposes such as a toileting chair in bathrooms/toilets and other suitable places in the home.

1.6 General remarks concerning use

1. Setting the seat height – this is carried out without tools, this height setting is not meant to be used on a daily basis. The chair should be adjusted to the individual user on delivery.
How to adjust the height – release the spring-loaded screw on both sides and turn these so that they rest against the outer surface. The seat can now be raised until the desired height is reached, turn the spring loaded screw so that it engages again. See section 3 concerning tips about using the settings.
WARNING: The spring loaded screw MUST be engaged before using the chair.
2. Back support – the back support will automatically angle itself according to the user pressure, it can also be moved up or down to suit individual needs by loosening the screws on the brackets, placing the unit at the correct height and tightening the screws again. This does not apply to the fabric back.
3. Foot supports – remove the clips and adjust the foot support to the required height. If the supports can be angled the support can be pulled out to the required angle and will lock automatically. By releasing the small (black) handle the foot support can be lowered.
4. Neck support – use the hand screw to adjust height and angle.
5. The armrests can be raised to allow sideways transfer – ensure that the users arms cannot be trapped or squeezed during this operation.

1.7 Using the tilt function – pull the cable lightly upward and tilt the chair to the desired position.

This operation requires less effort if you push against one of the back legs with your foot whilst activating the handle.

Do not lift from the shoulders and always keep a straight back.

Ensure that the user keep his/her hands inside the armrest when going through doors and corridors. The user should sit calmly during this kind of movement.

When going through corridors or over doorsteps (max. height 5 cm.) it is best to pull the chair, thus ensuring maximum stability.

Brake the wheels if there is any danger of inadvertent movement ie. on a ramp or other slope.

When using with other equipment ensure that no dangerous situations can arise eg. when using with a hoist ensure that sling straps cannot get tangled around wheels or similar. It is the carers/institutions responsibility to ensure that using the chair is safe and secure according to relevant laws/demands.

2. Cleaning

The chair should be cleaned after use and if used for more than one person **MUST** be thoroughly cleaned after each use and according to relevant procedures.

The chair is washed using soap and warm water, the seat may be removed and washed down.

When the chair is used as a toilet chair ensure that the bucket is correctly placed under the seat. The bucket and lid must be used and cleaned according to relevant regulations. The bucket and lid can stand cleaning in a bedpan washer.

3. Tips on using the settings

The chair can be adjusted from approx +5° (forwards) to -30° (backwards)

4. Maintenance

Apart from the daily check the chair must be inspected at regular intervals (minimum 2 times a year). A skilled and competent person must carry out this inspection. A checklist may be obtained from Ergolet A/S. Only original spare parts or accessories are to be used and Ergolet A/S will not take responsibility if this is not ensured.

5. Guarantee

Hera is delivered with a 12 month guarantee, this guarantee does not damage caused by the following.:

- Excessive load
- excessive force
- fault operating
- no or faulty maintenance

6. Spare parts:

- xxx-xxxxx Gas spring
- xxx-xxxxx wheel w. brakes
- xxx-xxxxx spring loaded screw
- xxx-xxxxx handle for adjustment.

7.0 TECHNICAL DATA



Seat Width	430 mm
Distance between arm rests	470 mm
Seat depth	420 mm
Seat height	520 - 600 mm
Total width	600 mm
Total height	1023-1123mm (top of handles)
Weight (as photo)	approx 22 kg
Angle of tilt	+5 til -30 Deg.
Weight capacity	140 kg

- The Ergolet bath and toilet chair, with lift up arm rests, has been developed with the carer and user in mind. The tilt function is easily activated using the cable under the handle. The chair can be placed in any desirable position using the gas spring e.g. In a horizontal or tilt position.
- An unique feature of the chair is the height adjustment which can be carried out without using tools.
- The seat is of black PU foam material and is available in two versions, with or without the front opening. The back support, also of PU foam, is height adjustable for better comfort. Alternatively this may be a fabric back.
- A foam cushioned neck support can be adjusted both in height and angle.
- The foot supports are also height adjustable and foldable. High quality wheels including the two rear wheels with brakes are standard.
- The toilet receptacle is integrated into the chassis, thus giving extra space to place the chair over the toilet and also ensures easy cleaning.
- The chassis is made off stainless steel.

7.1 EXPLANATION OF STICKERS



Ergolet is a trademark
Navn: Chair name
Serie nr.: Chair serial number
(used to identify this chair at
Ergolet)
Dato: Date of manufacture

ACCESSORIES

Neck support



Back rest PU



Calf strap



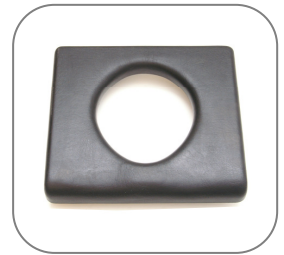
Hair washtray



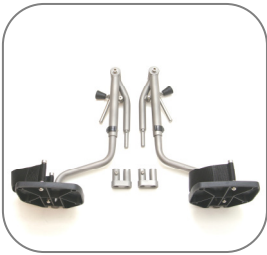
Spec. support
(leg support)



PU seat



Foot rest standard



Cover for seat



Side support



Seat with hygiene
opening



Width extension
(arm rests)



Gel cushion



Cross bar



Bucket





Dealer:

Manufacturer:
Ergolet A/S
Tårnborgvvej 12 C
4220 Korsoer

Tel.: + 45 58 37 37 20
Fax: + 45 58 37 31 72
e-mail: ergolet@ergolet.dk
www.ergolet.dk